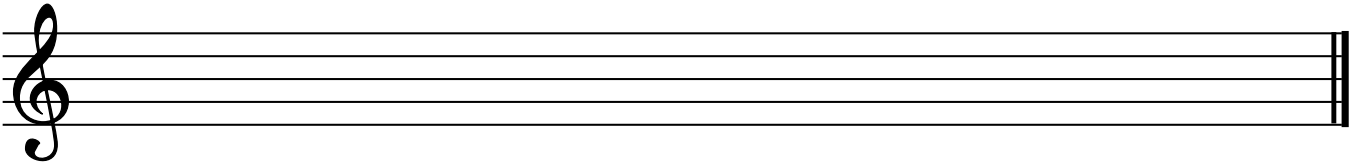


# Writing Notes

(Remember to put the stems on correctly)

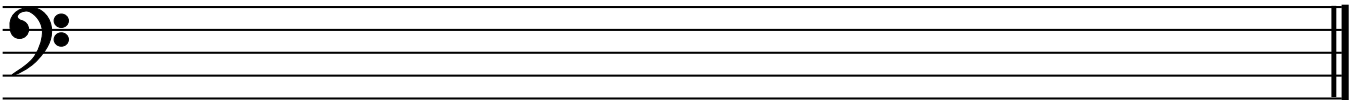
1. A. Write these quarter notes



C G D E C F G E C D F G

- B. Add a time signature and bar lines that match  
C. Play

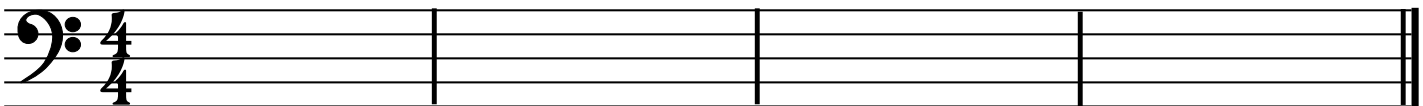
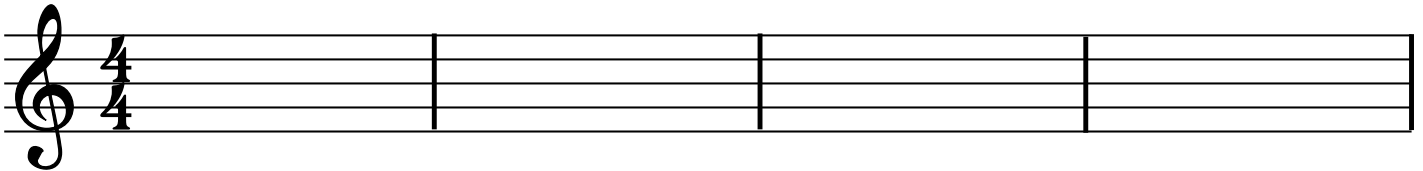
2. A. Write these quarter notes



G C F E G D C F G E D C

- B. Add the time signature you did not use before and bar lines that match  
C. Play

3. Using quarter notes, follow the directions very carefully- this is tricky! PLAY



Start by placing an E on the treble clef. Place the next note down a 2nd.  
Place the next note down a 2nd. Place the next note up a 2nd.  
Place the next note up a 2nd. Place the same note 3 more times with the last 2 tied.  
Place the next note down a 2nd. Place the same note 3 more times and tie the last two.  
Place the next note up a 2nd. Place the next note up a 3rd.  
Place the same note 2 more times and tie them.

Move to the bass clef line and place an E. Place the next note down a 2nd.  
Place the next note down a 2nd. Place the next note up a 2nd.  
Place the next note up a 2nd. Place the same note 3 more times.  
Place the next note down a 2nd. Place the same note again.  
Place the next note up a 2nd. Place the next note down a 2nd.  
Place the next note down a 2nd but make it a whole note.